

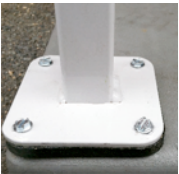
The safe & affordable install

Applicable for residential or light commercial installations



Heat Pump Stand SPECS
QSTD2001

A Close Up:



The Quick-Stand has a fixed height of 18". The stand also has 4 pre-drilled holes on each of the four legs.



QSTD2001 is very simple to install, has 16 points of rubber vibration. It also comes with stainless steel hardware.



The QSTD2001 comes with 2 multi position clips for mounting the unit to the stand.

2 Dimensionally Adjustable

Height 18" Fixed

Width 24" x 38"

Length 30" x 48"

Quick-Sling Quick Stand provides you with a non-swinging, solid platform that is quick, safe, stable and affordable.

Patent Pending