

PRODUCT INFORMATION PACKET



Model No: 056T11ORR40002A2

Catalog No: H1051AV1

JuggerNaut® Condenser Fan Motor, 1.5&1 HP, 3 Ph, 60 Hz, 230/460&190/380 V, 56HZ Frame, OPAO



Regal and Century are trademarks of Regal Rexnord Corporation or one of its affiliated companies.

©2023 Regal Rexnord Corporation, All Rights Reserved. MC017097E





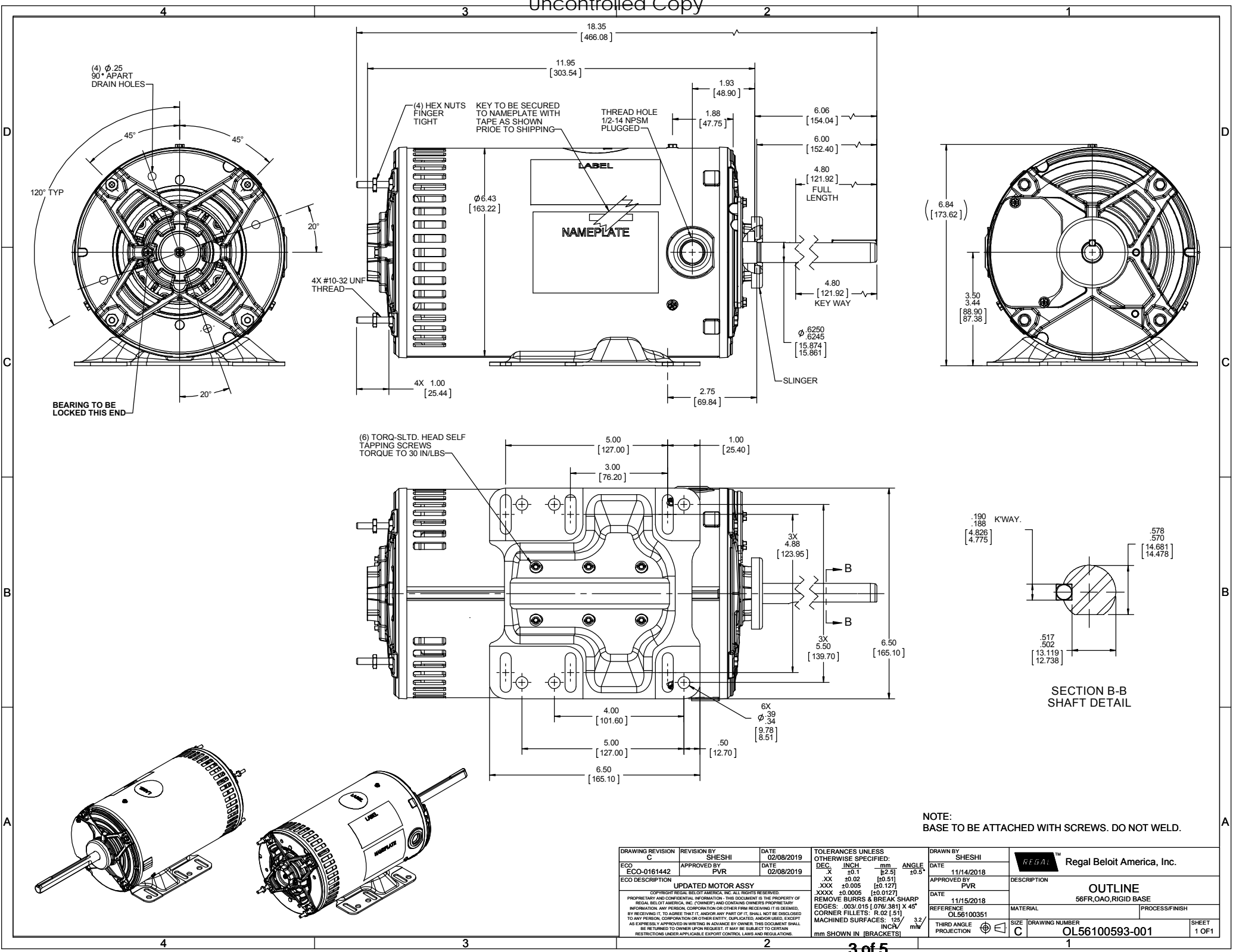
Nameplate Specifications

Phase	3	Output HP	1.5&1 Hp
Voltage	230/460&190/380 V	Speed	1140/950 rpm
Service Factor	1	Frame	56HZ
Enclosure	Open Air Over	Thermal Protection	Thermally Protected
Efficiency	80&77 %	Ambient Temperature	70 °C
Frequency	60 Hz	Current	6/3&5.4/2.7 A
Duty	Continuous	Insulation Class	F
UL	Recognized	CSA	Y
CE	N	Number of Speeds	1


Technical Specifications

Electrical Type	Squirrel Cage Induction Run	Starting Method	Line Or Inverter
Poles	6	Rotation	Reversible
Mounting	Bolt-on Base	Drive End Bearing	Ball
Opp Drive End Bearing	Ball	Frame Material	Rolled Steel
Shaft Type	Single Special Extension	Frame Length	9.65 in
Shaft Diameter	0.625 in	Shaft Extension	6 in
Outline Drawing	OL56100593-001		

This is an uncontrolled document once printed or downloaded and is subject to change without notice. Date Created:10/10/2023



NOTE:
BASE TO BE ATTACHED WITH SCREWS. DO NOT WELD.

DRAWING REVISION C		REVISION BY SHESHI	DATE 02/08/2019	TOLERANCES UNLESS OTHERWISE SPECIFIED: DEC. INCH. mm ANGLE X \pm 0.1 [2.5] .XX \pm 0.02 [0.51] .XXX \pm 0.005 [0.127] .XXXX \pm 0.0005 [0.0127] REMOVE BURRS & BREAK SHARP EDGES: .003/.015 [0.076/.381] X 45° CORNER FILLETS: R.02 [1.51] MACHINED SURFACES: 125/3.2 INCH/ mm SHOWN IN [BRACKETS]				DRAWN BY SHESHI		 Regal Beloit America, Inc.	
ECO-0161442	APPROVED BY PVR	DATE 02/08/2019	DATE 11/14/2018					DATE 11/15/2018	REFERENCE OL56100351		
ECO DESCRIPTION UPDATED MOTOR ASSY				DESCRIPTION OUTLINE 56FR.OAO,RIGID BASE				MATERIAL OL56100351		PROCESS/FINISH	
COPYRIGHT REGAL BELOIT AMERICA, INC. ALL RIGHTS RESERVED. PROPRIETARY AND CONFIDENTIAL INFORMATION - THIS DOCUMENT IS THE PROPERTY OF REGAL BELOIT AMERICA, INC. FORNERY AND CONTAINS OWNERS PROPRIETARY INFORMATION. ANY PERSON, CORPORATION OR OTHER FIRM RECEIVING IT IS DENIED, BY RECEIVING IT, TO ADVERTISE THAT IT, AND/OR ANY PART OF IT, SHALL NOT BE DISCLOSED TO ANY PERSON, CORPORATION OR OTHER ENTITY, DUPLICATED, AND/OR USED, EXCEPT AS EXPRESSLY APPROVED IN WRITING IN ADVANCE BY OWNER. THIS DOCUMENT SHALL BE RETURNED TO OWNER UPON REQUEST. IT MAY BE SUBJECT TO CERTAIN RESTRICTIONS UNDER APPLICABLE EXPORT CONTROL LAWS AND REGULATIONS.				THIRD ANGLE PROJECTION				SIZE C		DRAWING NUMBER OL56100593-001	
										SHEET 1 OF 1	

Uncontrolled Copy

CERTIFICATION DATA SHEET**CUSTOMER:****CUSTOMER****PO#:****ORDER #:****CUSTOMER PART****#:****CONN. DIAGRAM:** CDTD102**OUTLINE:** OL56100593-001**MOUNTING:** F1 ONLY**WINDING #:** NT56614 3 B**TYPICAL MOTOR PERFORMANCE DATA**

HP	kW	SYNC. RPM	F.L. RPM	FRAME	ENCLOSURE	KVA CODE	DESIGN
1 1/2&1	1.12&0.75	1200	1140&950	56HZ	OPAO	J	NO DESIGN CODE

PH	Hz	VOLTS	AMPS	START TYPE	DUTY	INSL	S.F.	AMB°C
3	60/50	208-230/460&190/380	5.6-6/3&5.4/2.7	ACROSS THE LINE	CONTINUOUS	F3	1.0/1.0	70

FULL LOAD EFF:	80&77	3/4 LOAD EFF:	80	1/2 LOAD EFF:	77.4	GTD. EFF		ELEC. TYPE
FULL LOAD PF:	59&54	3/4 LOAD PF:	50.2	1/2 LOAD PF:	38.4	77		SQ CAGE IND RUN

F.L. TORQUE		LOCKED ROTOR AMPS		L.R. TORQUE		B.D. TORQUE		F.L. RISE°C
6.75	LB-FT	29.1 / 14.5		17.23	LB-FT 255 %	22.34	LB-FT 331 %	0

SOUND PRESSURE @ 3 FT.	SOUND POWER	ROTOR WK^2	MAX. WK^2	SAFE STALL TIME	STARTS / HOUR	APPROX. MOTOR WGT
0 dBA	10 dBA	0 LB-FT^2	0 LB-FT^2	0 SEC.	0	0 LBS.

***** SUPPLEMENTAL INFORMATION *****

DE BRACKET TYPE	ODE BRACKET TYPE	MOUNT TYPE	ORIENTATION	SEVERE DUTY	HAZARDOUS LOCATION	DRIP COVER	SCREENS	PAINT
STANDARD	STANDARD	RIGID	SHAFT UP	FALSE	NONE	FALSE	NONE	BLACK (POWDER)

BEARINGS		GREASE	SHAFT TYPE	SPECIAL DE	SPECIAL ODE	SHAFT MATERIAL	FRAME MATERIAL
DE	ODE						
BALL	BALL	POLYREX EM	SGL SPL EXT	SPECIAL	NONE	AISI 1144 (MS1103)	ROLLED STEEL
6203	6203						

THERMO-PROTECTORS				THERMISTORS	CONTROL	SPACE HEATERS
THERMOSTATS	PROTECTORS	WDG RTDs	BRG RTDs			
NONE	AUTOMATIC	NONE	NONE	NONE	FALSE	NONE VOLTS

*

N

O

T

E

S

*

INVERTER TORQUE: NONE
INV. HP SPEED RANGE: NONE

ENCODER: NONE
 NONE NONE
 NONE NONE PPR

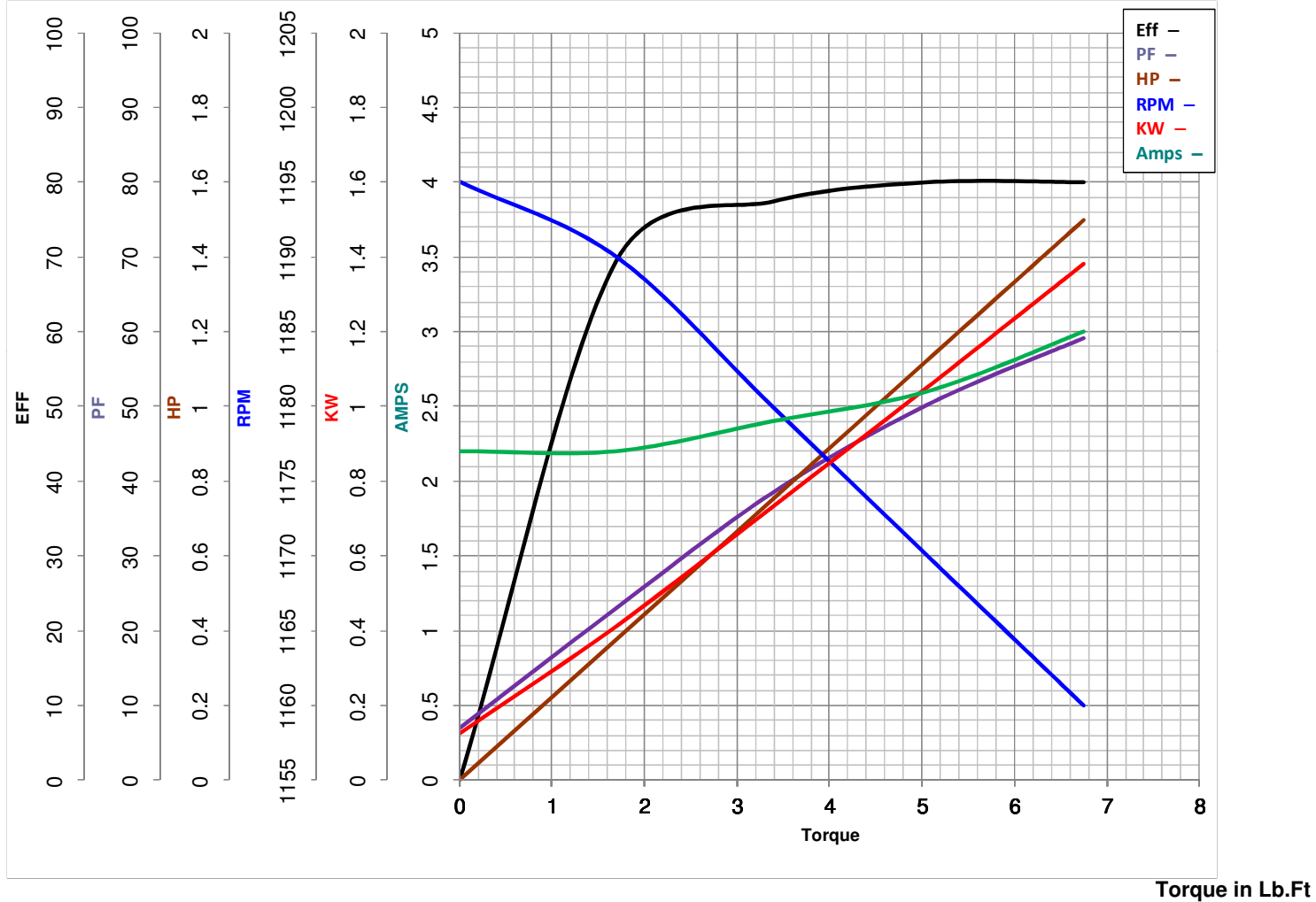
BRAKE: NONE NONE
 NONE P/N NONE
 NONE NONE
 NONE FT-LB NONE V NONE Hz
PREPARED BY: Bhargavi Dontham**DATE:** 02/08/2019 04:52:30 AM

FORM 3531 REV.3 02/07/99

** Subject to change without notice.

CENTURY

TYPICAL PERFORMANCE CURVE for AC MOTOR

Customer**Curve at**460**Volts****HP** 1.5&1**PHASE** 3**Model No** 56T11ORR40002A260**HZ**1.5**HP****VOLTS** 208-230/460&190/380**Catalog No** H1051AV1**HZ** 60&50**RPM** 1140&950

Torque in Lb.Ft

FL TORQUE 6.75 **Lb.Ft****BD TORQUE** 22.3 **Lb.Ft****LR TORQUE** 17.23 **Lb.Ft****FL AMPS** 5.6-6/3**PU TORQUE** 17.2 **Lb.Ft****LR AMPS** 14.54**WINDING** NT56614-3**Prepared By**

BHARGAVI

Date 2/4/2019